

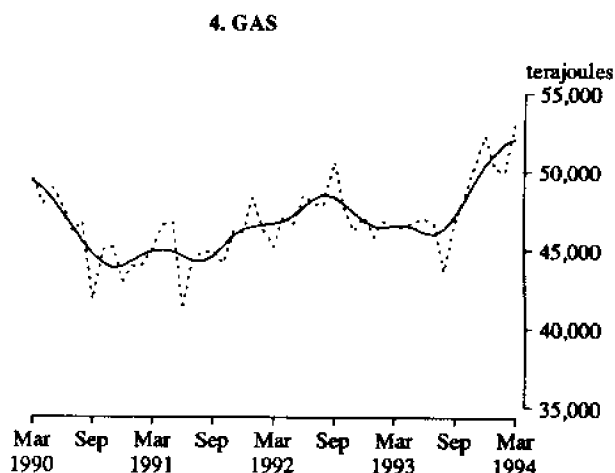
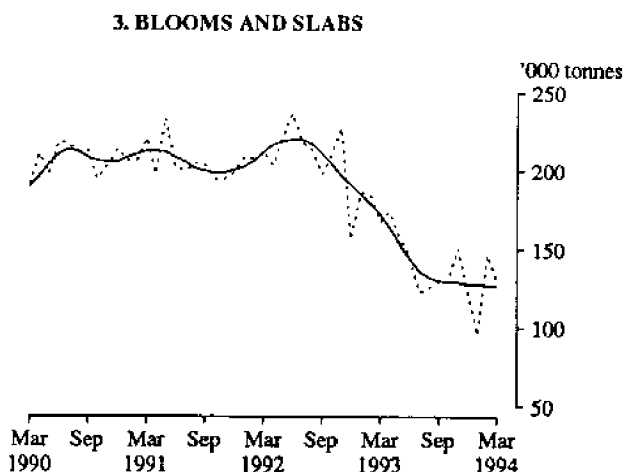
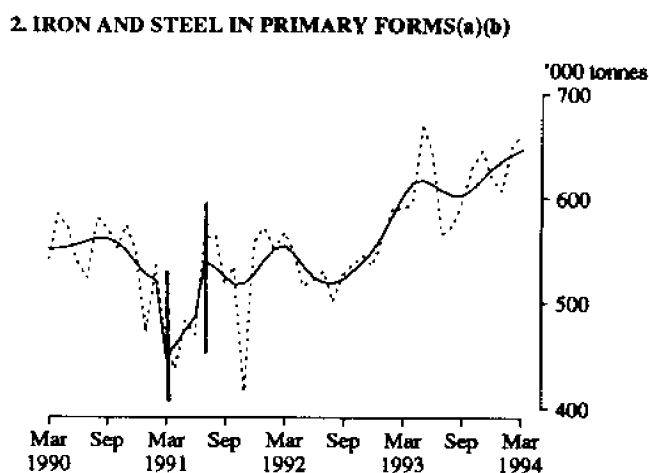
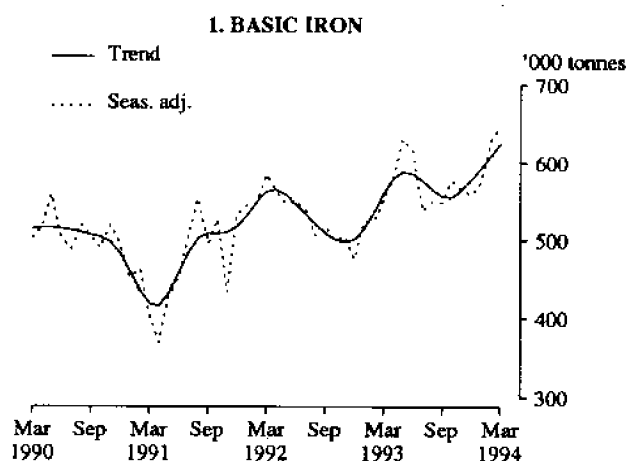
**MANUFACTURING PRODUCTION, AUSTRALIA
MARCH 1994, PRELIMINARY**

NOTES

This publication presents preliminary monthly estimates for selected major indicators of manufacturing production for Australia. The statistics are collected from all the relevant manufacturing establishments other than single establishment manufacturing enterprises with fewer than four persons employed and are part of a much broader range of items published quarterly. For details of these see "Related publications", in the Explanatory Notes at the back of this publication. The next issue will be released on 25 May 1994.

IAN CASTLES
Australian Statistician

PRODUCTION STATISTICS, AUSTRALIA : TRENDS



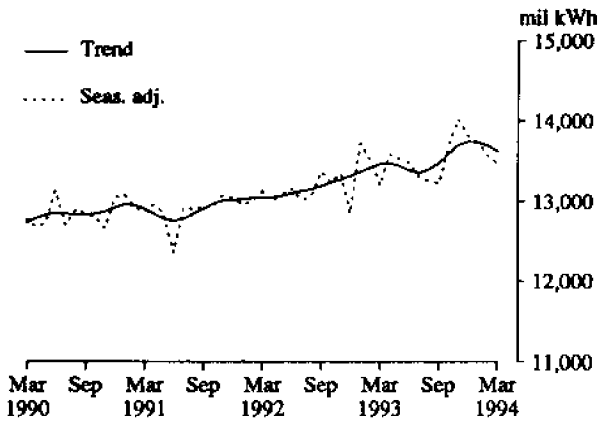
For footnotes see end of graph.

INQUIRIES

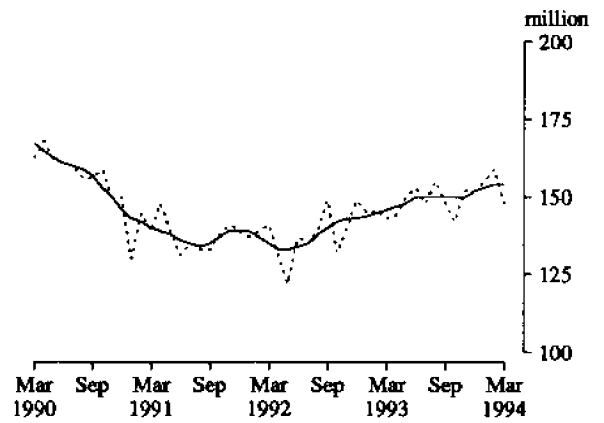
- for further information about statistics in this publication and the availability of related unpublished statistics, contact Rod Smith on Melbourne (03) 615 7635 or any ABS office.
- for information about other ABS statistics and services please refer to the back page of this publication.

PRODUCTION STATISTICS, AUSTRALIA : TRENDS

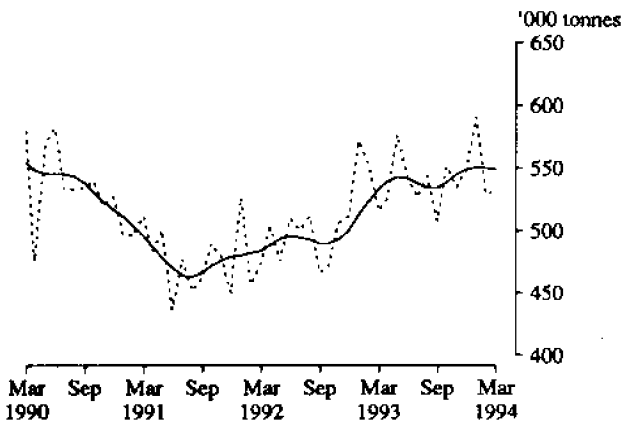
5. ELECTRICITY



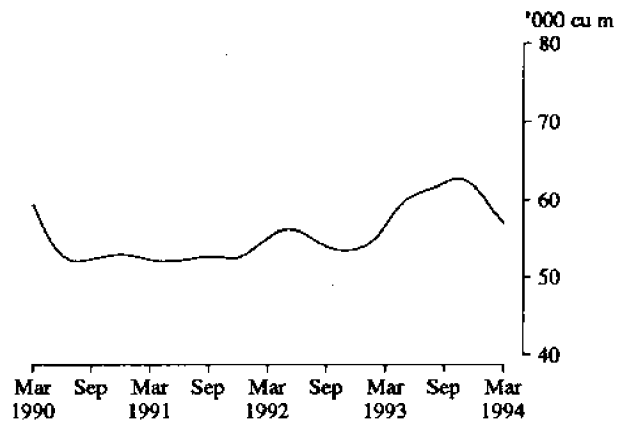
6. BRICKS, CLAY



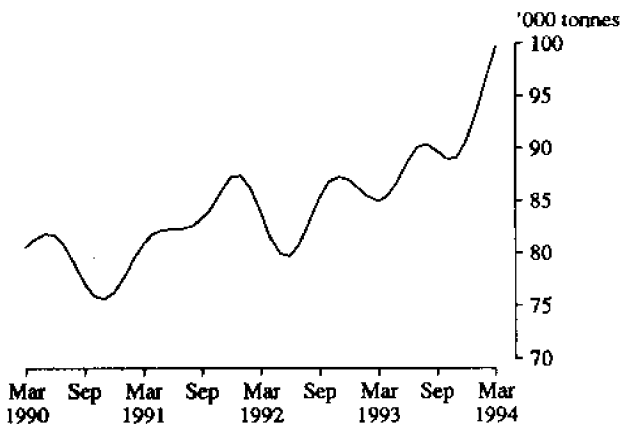
7. CEMENT, PORTLAND



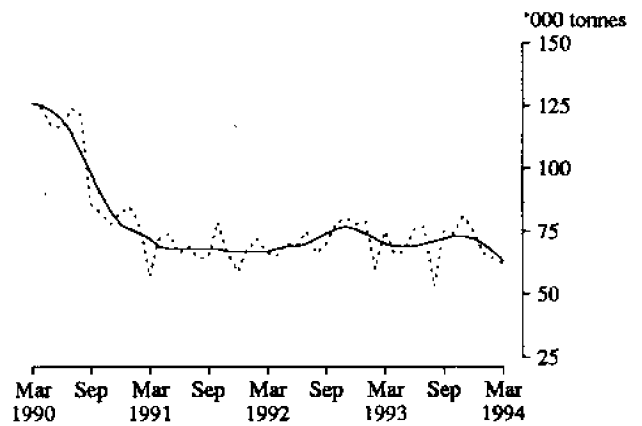
8. PARTICLE BOARD AND SIMILAR BOARD(c)



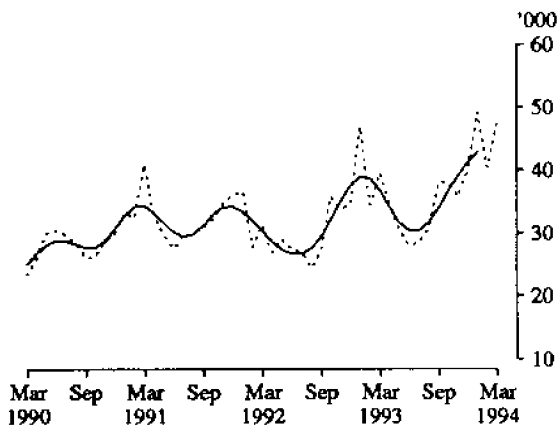
9. PLASTICS IN PRIMARY FORMS(c)



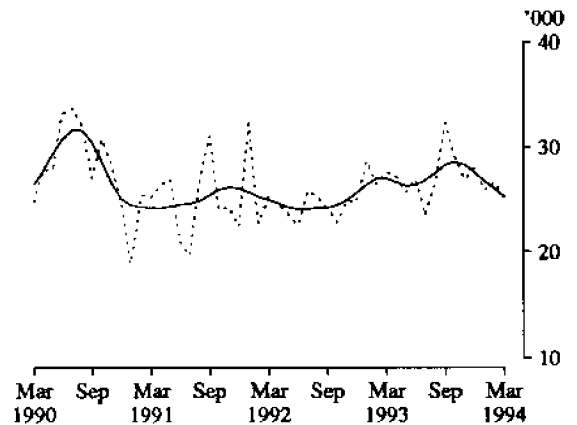
10. SULPHURIC ACID; OLEUM



11. REFRIGERATORS, DOMESTIC(d)

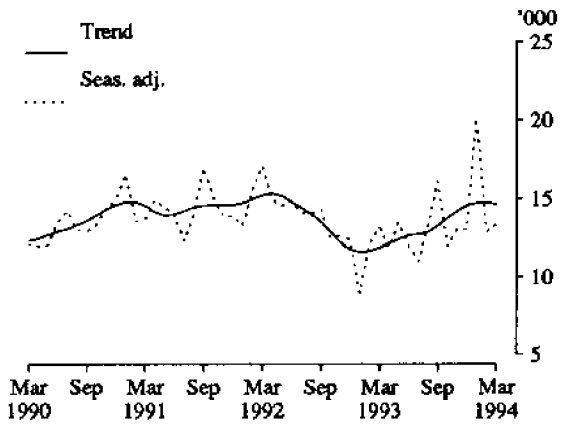


12. CLOTHES WASHING MACHINES, DOMESTIC

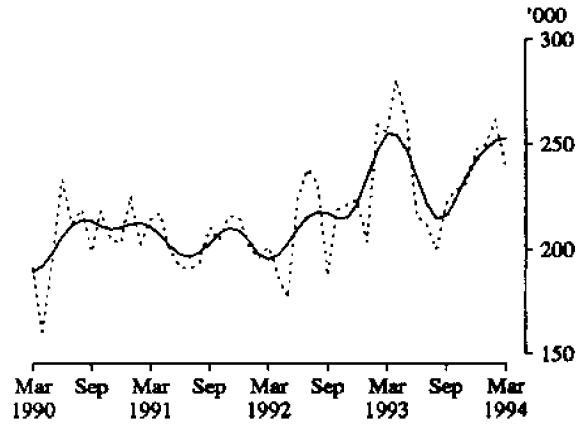


PRODUCTION STATISTICS, AUSTRALIA : TRENDS

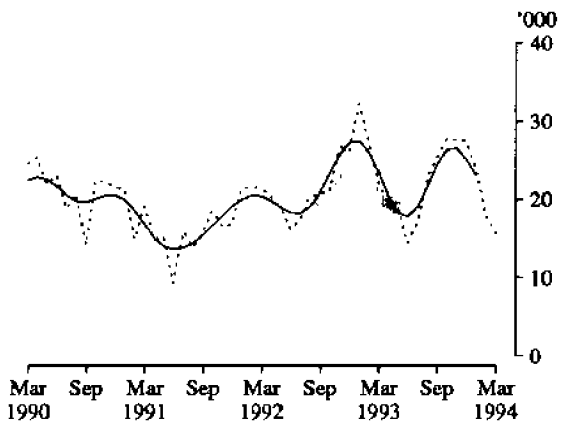
13. TELEVISION SETS



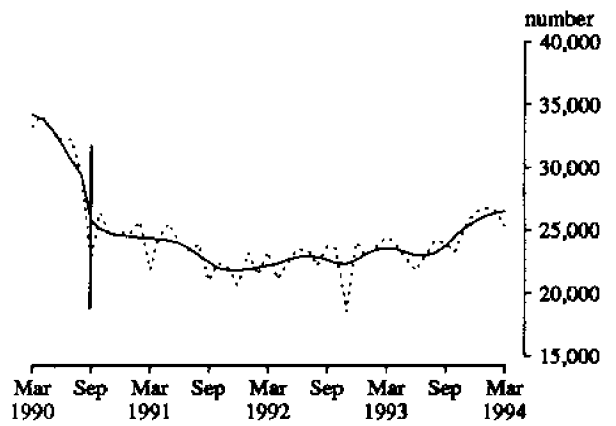
14. ELECTRIC MOTORS



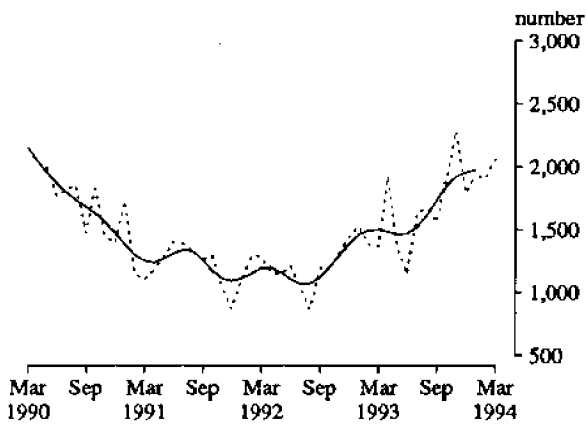
15. LAWN MOWERS, PETROL-ROTARY TYPE(d)



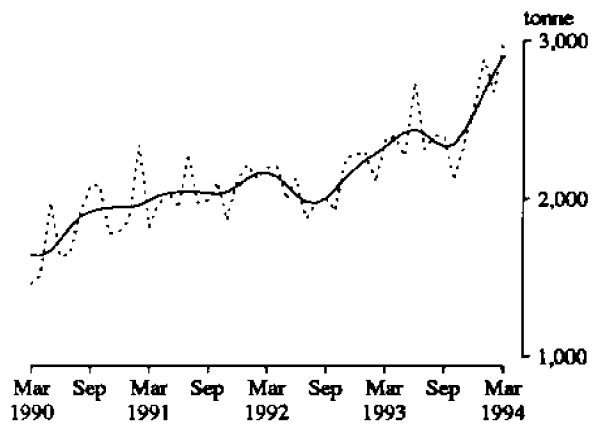
16. MOTOR VEHICLES (CARS AND STATION WAGONS)(e)



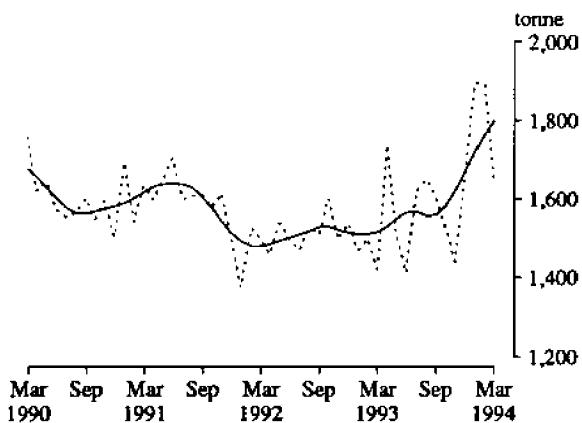
17. MOTOR VEHICLES FOR GOODS AND MATERIALS(d)



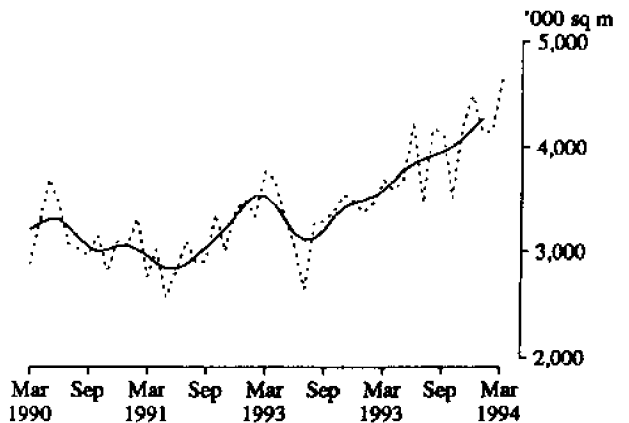
18. YARN, COTTON



19. YARN, WOOL

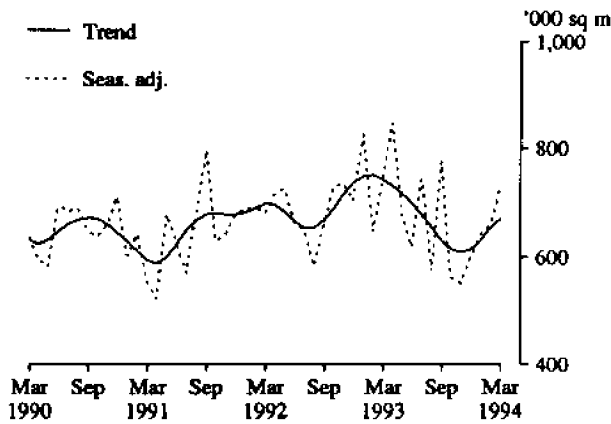


20. WOVEN FABRIC, COTTON (INCL. TOWELLING)(d)

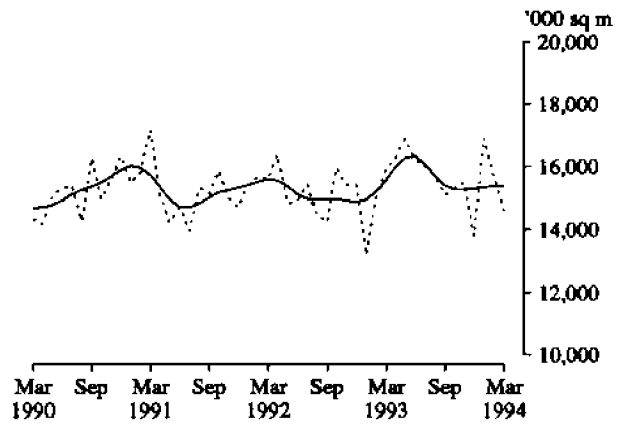


PRODUCTION STATISTICS, AUSTRALIA : TRENDS

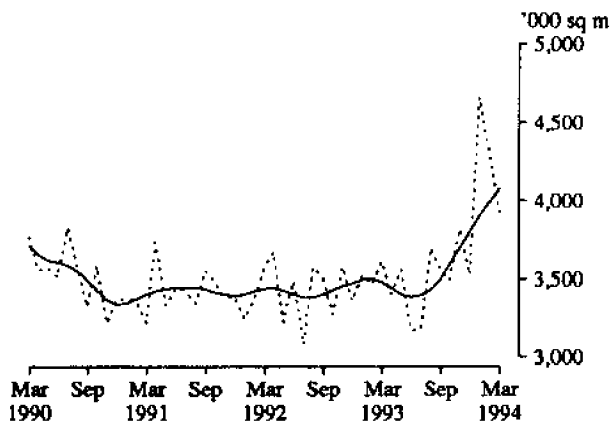
21. WOVEN FABRIC, WOOL(INCL. BLANKETING)



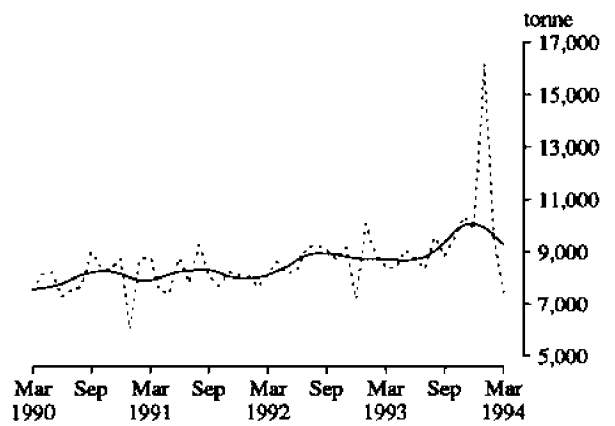
22. WOVEN FABRIC, MAN-MADE FIBRE



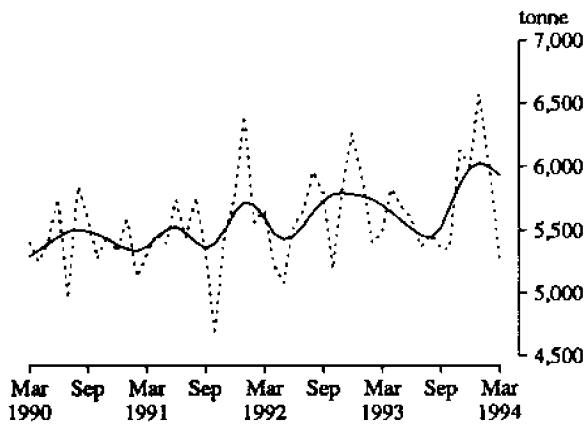
23. TEXTILE FLOOR COVERINGS



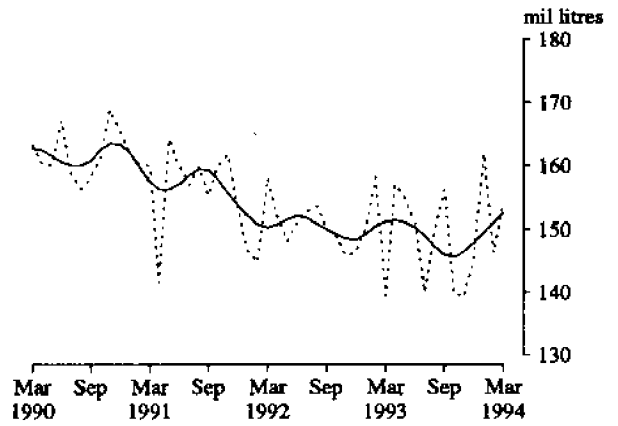
24. CONFECTIONERY, CHOCOLATE BASED



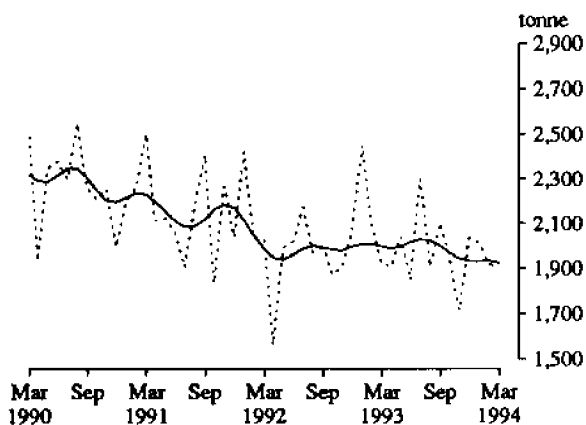
25. CONFECTIONERY, OTHER



26. BEER



27. TOBACCO AND CIGARETTES



(a) There is a drop in the level of the trend from March 1991 due to plant maintenance. (b) There is a break in the series as data after July 1991 excludes a small proportion of total production due to the withdrawal of consent for the ABS to release the information. (c) Seasonally adjusted estimates will not be published

PRODUCTION STATISTICS, AUSTRALIA, MARCH 1994, PRELIMINARY

No. Item	Series	Unit	1993									1994			Percentage changes between-	
			July	Aug.	Sept.	Oct.	Nov.	Dec.	Jan.	Feb.	Mar.	Feb. 94 and Mar. 94	Mar. 93 and Mar. 94			
1. Basic iron, spiegeleisen and sponge iron	Orig.	'000 tonnes	572	588	574	613	600	591	582	556	607	9.2	15.4			
	S. adj.	"	539	552	550	577	566	559	575	628	646	3.0	16.6			
	Trend r	"	577	566	557	556	565	579	593	609	624	2.5	11.2			
2. Iron and steel in ingots or other primary forms(a)	Orig.	"	604	613	625	654	638	638	613	590	647	9.7	10.6			
	S. adj.	"	566	574	597	628	645	620	607	651	661	1.5	12.1			
	Trend r	"	607	603	603	609	619	629	636	642	647	0.8	7.2			
3. Blooms and slabs(b)	Orig.	"	133	138	139	137	137	126	r 92	129	135	4.7	-22.4			
	S. adj.	"	123	126	130	130	151	124	r 96	147	130	-11.8	-22.6			
	Trend r	"	136	132	130	129	129	128	128	127	127	0.1	-25.9			
4. Gas(c)	Orig.	terajoules	56,807	54,634	51,367	48,073	46,251	43,736	r 39,975	r 40,478	47,002	16.1	14.5			
	S. adj.	"	46,652	43,617	46,719	48,320	50,423	52,309	r 50,195	r 49,924	53,310	6.8	14.7			
	Trend r	"	45,988	46,330	47,112	48,199	49,375	50,403	51,173	51,784	52,096	0.6	11.9			
5. Electricity	Orig.	mil kWh	14,590	14,354	13,254	13,464	13,302	13,456	13,171	r 12,517	13,489	7.8	2.1			
	S. adj.	"	13,303	13,252	13,216	13,657	14,028	13,814	13,722	r 13,570	13,478	-0.7	2.2			
	Trend r	"	13,356	13,395	13,482	13,596	13,696	13,741	13,731	13,689	13,630	-0.4	1.2			
6. Bricks, clay	Orig.	million	154	166	156	147	161	140	r 98	150	170	13.3	3.7			
	S. adj.	"	148	155	148	142	152	152	r 155	159	148	-6.7	3.8			
	Trend r	"	150	150	150	150	150	152	153	154	154	0.5	5.9			
7. Cement, Portland	Orig.	'000 tonnes	558	572	518	594	594	530	407	r 497	561	12.9	4.7			
	S. adj.	"	527	544	508	552	535	548	591	r 529	533	0.7	3.4			
	Trend r	"	538	535	535	539	545	549	551	550	549	-0.2	2.7			
8. Particle board and similar boards(d)	Orig.	'000 cu m	61	68	67	68	69	58	32	57	67	17.5	0.0			
	S. adj.	"	n.a.	n.a.	n.a.	n.a.	n.a.	n.a.	n.a.	n.a.	n.a.	n.a.	n.a.			
	Trend r	"	61	62	62	63	63	62	60	58	57	-2.5	0.4			
9. Plastics in primary forms(e)	Orig.	'000 tonnes	94.8	94.8	95.7	95.2	90.0	79.3	r 82.2	r 95.4	105.1	10.2	9.6			
	S. adj.	"	n.a.	n.a.	n.a.	n.a.	n.a.	n.a.	n.a.	n.a.	n.a.	n.a.	n.a.			
	Trend r	"	90.1	90.4	89.7	89.0	89.1	90.7	93.4	96.6	99.7	3.2	17.3			
10. Sulphuric acid; oleum	Orig.	"	64	42	61	67	76	83	82	71	72	1.4	-15.3			
	S. adj.	"	77	53	75	74	81	75	66	64	62	-3.2	-17.4			
	Trend r	"	70	71	72	73	73	72	70	67	63	-5.8	-9.5			
11. Refrigerators, domestic	Orig.	'000	29.9	32.5	41.8	38.8	41.6	37.2	35.8	41.6	49.4	18.9	22.4			
	S. adj.	"	28.6	30.8	38.2	38.0	35.8	39.8	49.3	40.4	47.4	17.3	19.5			
	Trend r	"	30.4	31.9	34.1	36.7	39.2	41.2	43.0	(f)	(f)	n.a.	n.a.			
12. Clothes washing machines, domestic	Orig.	"	27.8	32.3	34.5	29.6	29.9	25.0	11.8	26.4	29.4	11.1	-5.1			
	S. adj.	"	23.6	26.8	32.3	29.1	27.0	28.0	25.9	26.7	25.1	-6.0	-9.3			
	Trend r	"	26.9	27.6	28.3	28.6	28.3	27.6	26.8	26.1	25.3	-2.9	-6.5			
13. Television sets(g)	Orig.	"	12.3	15.7	17.4	13.8	14.7	12.1	5.4	13.1	15.6	18.9	5.4			
	S. adj.	"	11.0	13.4	16.1	12.0	13.1	13.0	20.1	12.9	13.4	3.4	1.3			
	Trend r	"	12.7	12.9	13.3	13.8	14.2	14.6	14.7	14.8	14.6	-0.8	23.1			
14. Electric motors	Orig.	"	217	200	262	252	254	225	161	256	279	9.1	-3.4			
	S. adj.	"	212	200	223	228	231	247	250	262	239	-8.9	-6.6			
	Trend r	"	222	215	216	224	235	242	248	252	253	0.5	-0.9			

For footnotes see end of table

PRODUCTION STATISTICS, AUSTRALIA, MARCH 1994, PRELIMINARY

No. Item	Series	Unit	1993								1994			Percentage changes between—	
			July	Aug.	Sept.	Oct.	Nov.	Dec.	Jan.	Feb.	Mar.	Feb. 94 Mar. 94	Mar. 93 and Mar. 94	Mar. 94 and Mar. 94	
15. Lawn mowers petrol-rotary type	Orig.	'000	13.0	24.2	39.6	42.7	42.3	31.8	18.2	r 19.3	16.0	-17.1	-23.7		
	S. adj.	"	17.1	22.9	25.6	27.8	27.6	27.4	23.9	r 17.8	15.6	-12.0	-29.0		
	Trend r	"	19.2	21.8	24.6	26.4	26.5	25.2	23.1	(f)	(f)	n.a.	n.a.		
Motor vehicles—															
16. Cars and station wagons	Orig.	number	25,995	27,637	26,918	24,592	27,982	21,120	11,978	26,012	29,540	13.6	7.0		
	S. adj.	"	23,022	24,217	23,918	23,291	25,090	26,410	26,792	26,644	25,322	-5.0	3.4		
	Trend r	"	23,002	23,247	23,795	24,498	25,152	25,676	26,085	26,350	26,522	0.7	12.4		
17. Vehicles for goods and materials(h)	Orig.	"	1,720	1,877	1,752	2,223	2,172	1,549	803	1,857	2,358	27.0	51.7		
	S. adj.	"	1,649	1,672	1,557	1,901	2,287	1,794	1,924	1,914	2,066	7.9	51.2		
	Trend r	"	1,526	1,622	1,739	1,852	1,926	1,958	1,977	(f)	(f)	n.a.	n.a.		
Yarn(i)—															
18. Cotton	Orig.	tonne	2,623	2,539	2,618	2,478	2,357	2,306	1,583	r 2,549	3,081	20.9	26.2		
	S. adj.	"	2,316	2,398	2,386	2,116	2,332	2,568	2,883	r 2,671	3,011	12.7	26.8		
	Trend r	"	2,407	2,361	2,327	2,345	2,420	2,541	2,674	2,796	2,908	4.0	24.8		
19. Wool	Orig.	"	1,694	1,819	1,798	1,617	1,694	1,421	1,113	r 1,853	1,797	-3.0	15.9		
	S. adj.	"	1,623	1,652	1,605	1,532	1,440	1,653	1,896	r 1,895	1,641	-13.4	15.3		
	Trend r	"	1,567	1,558	1,560	1,583	1,623	1,670	1,722	1,766	1,801	2.0	18.8		
Woven fabric(j)—															
20. Cotton (incl. towelling)	Orig.	'000 sq m	4,511	4,237	4,501	4,128	4,020	3,779	1,619	4,180	4,810	15.1	29.8		
	S. adj.	"	3,466	4,175	4,128	3,515	4,178	4,491	4,143	4,157	4,643	11.7	26.1		
	Trend r	"	3,885	3,922	3,960	4,012	4,083	4,176	4,268	(f)	(f)	n.a.	n.a.		
21. Wool (incl. blanketing)	Orig.	"	731	633	806	601	652	544	369	r 725	832	14.8	0.1		
	S. adj.	"	744	576	777	562	552	599	641	r 661	728	10.1	-1.9		
	Trend r	"	679	655	631	616	610	615	631	654	671	2.6	-9.7		
22. Man-made fibre	Orig.	"	17,195	16,157	15,915	15,989	16,237	13,662	9,819	r 15,986	16,063	0.5	-8.4		
	S. adj.	"	15,993	15,707	15,104	15,307	15,503	13,812	16,921	r 15,679	14,599	-6.9	-8.5		
	Trend r	"	16,076	15,691	15,399	15,260	15,258	15,312	15,357	15,374	15,376	0.0	-1.3		
23. Textile floor coverings	Orig.	"	3,456	4,036	3,978	3,786	4,361	3,429	2,513	r 4,149	4,098	-1.2	10.6		
	S. adj.	"	3,183	3,700	3,549	3,493	3,822	3,525	4,665	r 4,305	3,924	-8.8	8.6		
	Trend r	"	3,398	3,436	3,504	3,599	3,703	3,804	3,904	3,994	4,081	2.2	17.2		
Confectionery—															
24. Chocolate base	Orig.	tonne	8,713	10,643	9,304	10,379	10,504	9,547	8,390	r 9,409	8,755	-7.0	-11.1		
	S. adj.	"	8,347	9,574	8,836	9,564	10,368	9,858	16,212	r 9,530	7,492	-21.4	-10.9		
	Trend r	"	8,803	9,039	9,393	9,767	10,032	10,089	9,937	9,631	9,283	-3.6	6.4		
25. Other	Orig.	"	5,734	6,295	6,070	6,216	6,990	5,548	3,342	5,583	5,764	3.2	-4.4		
	S. adj.	"	5,366	5,466	5,351	5,357	6,133	6,001	6,578	5,989	5,270	-12.0	-4.0		
	Trend r	"	5,460	5,441	5,521	5,687	5,867	5,988	6,027	5,997	5,929	-1.1	4.0		
26. Beer(j)	Orig.	mil litres	128	140	143	151	177	184	151	134	164	22.5	9.4		
	S. adj.	"	140	150	156	140	139	145	162	146	154	5.4	10.6		
	Trend r	"	149	147	146	146	147	148	150	151	153	1.0	0.9		
27. Tobacco and cigarettes(k)	Orig.	tonne	2,453	2,082	2,035	1,810	1,988	1,877	1,001	2,070	2,240	8.2	-1.1		
	S. adj.	"	2,300	1,908	2,105	1,963	1,718	2,035	2,014	1,919	1,900	-1.0	-1.1		
	Trend r	"	2,028	2,023	2,001	1,970	1,946	1,934	1,932	1,936	1,926	-0.5	-3.5		

(a) Includes ingots, puddled bars, pilings, blocks or lumps and steel in the molten state. (b) From rolling and forging of iron and steel (primary mills output). (c) Available for issue through mains. Includes natural gas. (d) Particle boards and similar boards of wood or other ligneous material. Includes boards for subsequent conversion to other purposes. Excludes laminated. Seasonally adjusted estimates will not be published until a longer time span of data are available to provide more reliable seasonal factors. (e) Includes liquid, paste, powder, granules, flakes, blocks, irregular shapes, lumps and similar forms. Seasonally adjusted estimates will not be published until a longer time span of data are available to provide more reliable seasonal factors. (f) See paragraph 9 of Explanatory Notes. (g) Excludes combination with radio etc. (h) Includes utilities, panel vans and prime movers for semi-trailers. (i) Includes mixtures predominantly of the fibre named. (j) Includes ale and stout. Excludes beverages with alcohol content of less than 1.15 per cent. (k) Source: Australian Tobacco Marketing Advisory Committee.

EXPLANATORY NOTES

Introduction

Preliminary estimates for March 1994 for certain major indicators of production are shown in the table on page 5. Production statistics for March 1994 for a more extensive range of commodities will be published later in the series of ten *Manufacturing Production Bulletins* (8357.0 to 8363.0 and 8367.0 to 8369.0).

Scope and coverage

2. Production statistics are not collected from single establishment manufacturing enterprises with fewer than four persons employed or from establishments predominantly engaged in non-manufacturing activities but which may carry out in a minor way some manufacturing. However, in general the contribution of these small producers to statistical aggregates is only marginal and data contained in this publication provide reliable information for the evaluation of movements in commodity production.

Comparability with other estimates

3. The ABS publishes quarterly estimates of constant price manufacturing production in the publication *Quarterly Indexes of Industrial Production, Australia* (8125.0). These estimates are shown as index numbers and are derived mainly from estimates of manufacturers' sales and stocks.

4. The production statistics published in the series of ten *Manufacturing Production Bulletins* (8357.0 to 8363.0 and 8367.0 to 8369.0) referred to in paragraph 1 account, in total, for less than half of the output of the manufacturing sector, so differences may occur between the general tendency (if there is one) in these items and changes in the quarterly indexes of industrial production. The comment applies with still greater force to the preliminary estimates for the major indicators of production shown in this publication.

Seasonally adjusted and trend estimates

5. Seasonally adjusted statistics are shown for all but two of the data items contained in this publication. In the seasonal adjustment, account has been taken not only of normal seasonal factors, but also where appropriate, of 'working day' effects (arising from the varying numbers of Sundays, Mondays, Tuesdays, etc. in the month) and the influence of Easter and Australia Day which may, in successive years, affect figures for different months. Details of the methods used in seasonally adjusting these series are available on request.

6. Seasonal adjustment procedures do not aim to remove the irregular or non-seasonal influences which may be present in any particular month, such as the effect of strikes, holiday shutdowns or other factors which vary with the prevailing demand for products. Irregular influences that are highly volatile can make it difficult to interpret the movement of the series even after seasonal adjustment.

7. The smoothing of seasonally adjusted series to create trend estimates is a means of reducing the impact of the irregular component of the series. The trend estimates have been derived by applying a 13-term Henderson weighted moving average to the seasonally adjusted series.

8. While this smoothing technique enables estimates of trend to be produced for the latest month, it does result in revisions to the estimates for the most recent months as data for subsequent months become available. Generally subsequent revisions become smaller and after 3 months

have little impact on the series. There will also be revisions as a result of revisions to the original estimates and annual reviews of seasonal and 'working day' factors.

9. Because of the highly irregular nature of some production series it is not possible to discern with reasonable confidence the current direction of the trend at the end of these series. For such highly irregular series the ABS does not provide the last two trend estimates.

10. Users may wish to refer to the ABS Information Papers *A Guide to Smoothing Time Series — Estimates of 'Trend'* (1316.0) and *Time Series Decomposition — An Overview* (1317.0) for more detailed information on smoothing of seasonally adjusted time series data.

Related publications

11. Other ABS publications which may be of interest are:

Manufacturing Production, Australia, Household Appliances and Electrical Equipment (8357.0) — issued quarterly

Manufacturing Production, Australia, Clothing and Footwear (8358.0) — issued quarterly

Manufacturing Production, Australia, Food, Drink, Tobacco, Stock and Poultry Food (8359.0) — issued quarterly

Manufacturing Production, Australia, Fibres, Yarns, Fabrics, Bedding and Floor Coverings, (8360.0) — issued quarterly

Manufacturing Production, Australia, Building Materials and Fittings (8361.0) — issued quarterly

Manufacturing Production, Australia, Plastics, Rubber, Paints, Detergents and Industrial Chemicals (8362.0) — issued quarterly

Manufacturing Production, Australia, Transport Equipment (8363.0) — issued quarterly

Manufacturing Production, Australia, Metal Products (8367.0) — issued quarterly

Manufacturing Production, Australia, Energy Products (8368.0) — issued quarterly

Manufacturing Production, Australia, Wood and Wood Products (8369.0) — issued quarterly

Manufacturing Production, Australia: Principal Commodities Produced, 1989-90 (8365.0)

Unpublished production data is also available from the ABS Sydney office. Please contact Colin Nicholson on (02) 268 4282.

12. Current publications produced by the ABS are listed in the *Catalogue of Publications and Products, Australia* (1101.0). The ABS also issues, on Tuesdays and Fridays, a *Publications Advice* (1105.0) which lists publications to be released in the next few days. The *Catalogue and Publications Advice* are available from any ABS office.

Symbols and other usages

- n.y.a. not yet available
- r figure or series revised since previous issue
- n.a. not available



For more information ...

The ABS publishes a wide range of statistics and other information on Australia's economic and social conditions. Details of what is available in various publications and other products can be found in the *ABS Catalogue of Publications and Products* available at all ABS Offices (see below for contact details).

Information Consultancy Service

Information tailored to special needs of clients can be obtained from the Information Consultancy Service available at ABS Offices (see Information Inquiries below for contact details).

National Dial-a-Statistic Line

0055 86 400

This number gives you 24 hour access, 365 days a year, for a range of statistics.

Electronic Data Services

A wide range of our data is available on electronic media. Selections of the most frequently requested statistics are available, updated daily, on DISCOVERY (Key *656#). The ABS PC TELESTATS service delivers major economic indicator main features ready to download into personal computers on the day of release. The PC AUSSTATS service enables on-line access to a data base of thousands of up-to-date time series. Selected datasets are also available on diskette or CD-ROM. For more details on electronic data services available, contact Information Services in any of the ABS Offices (see Information Inquiries below for contact details).

Bookshops and Subscriptions

There are over 400 titles of various publications available from ABS Bookshops in all ABS Offices (see below Bookshop Sales for contact details). The ABS also provides a subscription service through which nominated publications are provided by mail on a regular basis at no additional cost (telephone Publications Subscription Service toll free on 008 02 0608 Australia wide).

Sales and Inquiries

Regional Offices		Information Inquiries	Bookshop Sales
SYDNEY	(02)	268 4611	268 4620
MELBOURNE	(03)	615 7000	615 7829
BRISBANE	(07)	222 6351	222 6350
PERTH	(09)	323 5140	323 5307
ADELAIDE	(08)	237 7100	237 7582
HOBART	(002)	205 800	205 800
CANBERRA	(06)	207 0326	207 0326
DARWIN	(089)	432 111	432 111
National Office			
ACT	(06)	252 6007	008 020 608



Information Services, ABS, PO Box 10, Belconnen ACT 2616, or any ABS State office.

